

VERSION  
20241029



# FAIR

*bicycle*

## **DROP BEST AXS**

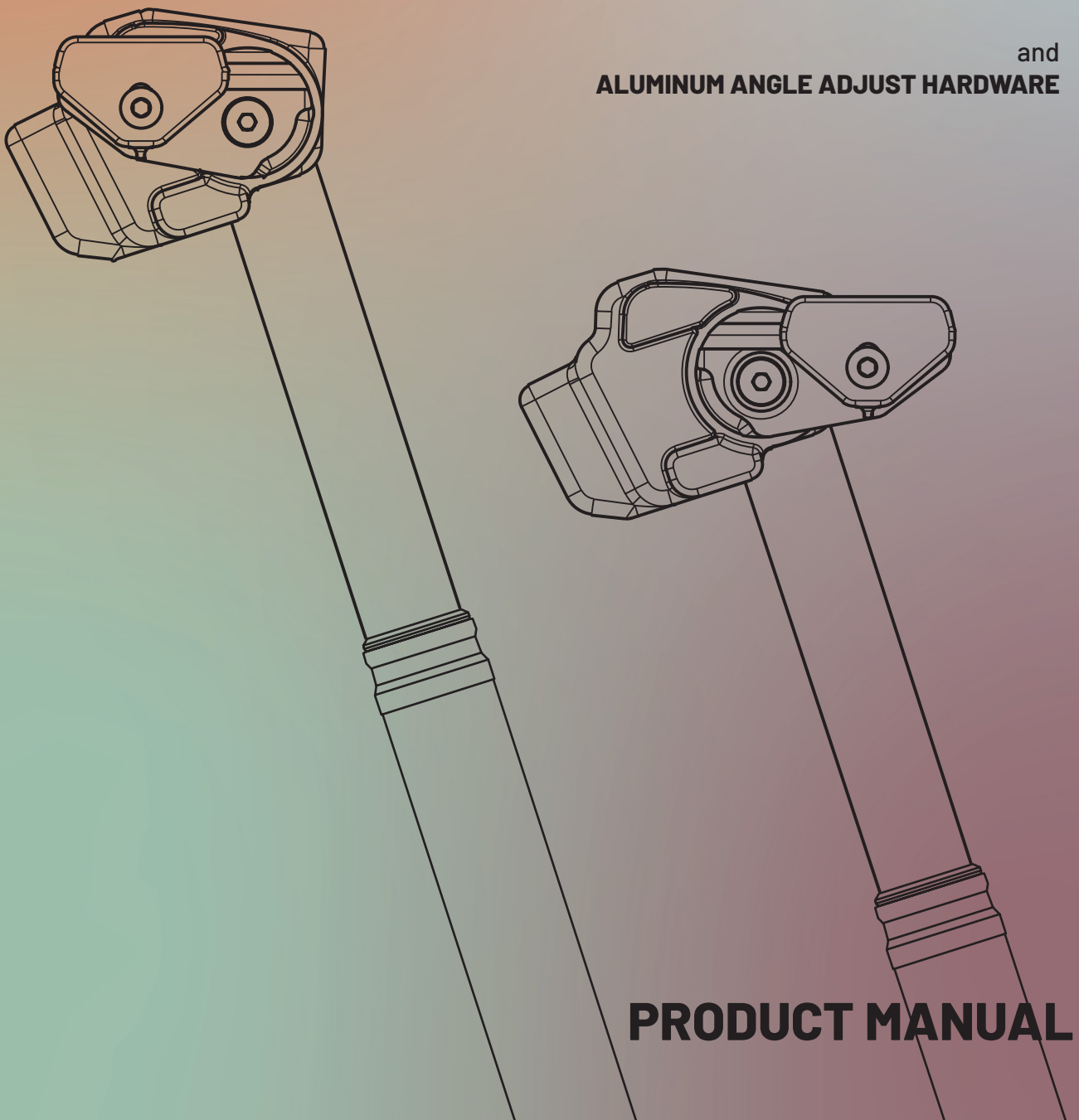
**OFFSET SADDLE CLAMP**

and

**TITANIUM MAIN BOLTS**

and

**ALUMINUM ANGLE ADJUST HARDWARE**



## **PRODUCT MANUAL**

# DIRECTORY

<b>1. SAFETY</b>	p.3
<b>2. COMPATIBILITY</b>	p.4
<b>3. PARTS DESCRIPTION</b>	p.5
<b>4. PREPARATION</b>	p.6
<b>5. INSTALLATION</b>	p.7-8
<b>6. MAINTENANCE</b>	p.9

# 1.SAFETY

## DEAR BICYCLE FRIEND!

Please read this manual.  
Please ride bikes, hard.

## IMPORTANT SAFETY NOTICE

This manual is meant to be used by professional bike mechanics. If you are not a professional bike mechanic you should not install these bike components. If you do not understand parts or the whole of this manual, contact FAIR bicycle or a professional bike mechanic and ask for advice.

Read this manual in its integrity.

All FAIR bicycle manuals are available here:  
[www.fairbicycle.com/manuals](http://www.fairbicycle.com/manuals)

Should you be unable to access this manual online, please contact FAIR bicycle.

FAIR bicycle  
Hübscheren 6  
8932 Mettmenstetten  
Switzerland

hello@fairbicycle.com  
+41 76 533 00 25

Do not undertake any manipulations other than those explained in this manual.

Here comes the phrase without which no product manual is complete:

Failure to follow the instructions in this manual can lead to serious injury or death.

## 2.COMPATIBILITY

### **THE DROP BEST AXS SADDLE CLAMP IS ONLY COMPATIBLE WITH:**

ALL ROCK SHOX REVERB™ AXS® SEATPOSTS.

MOST SADDLES THAT HAVE EITHER 7 MM  
ROUND RAILS (USUALLY METAL RAILS) OR 7X9 RESP.  
7X10 MM OVAL RAILS (USUALLY COMPOSITE RAILS).

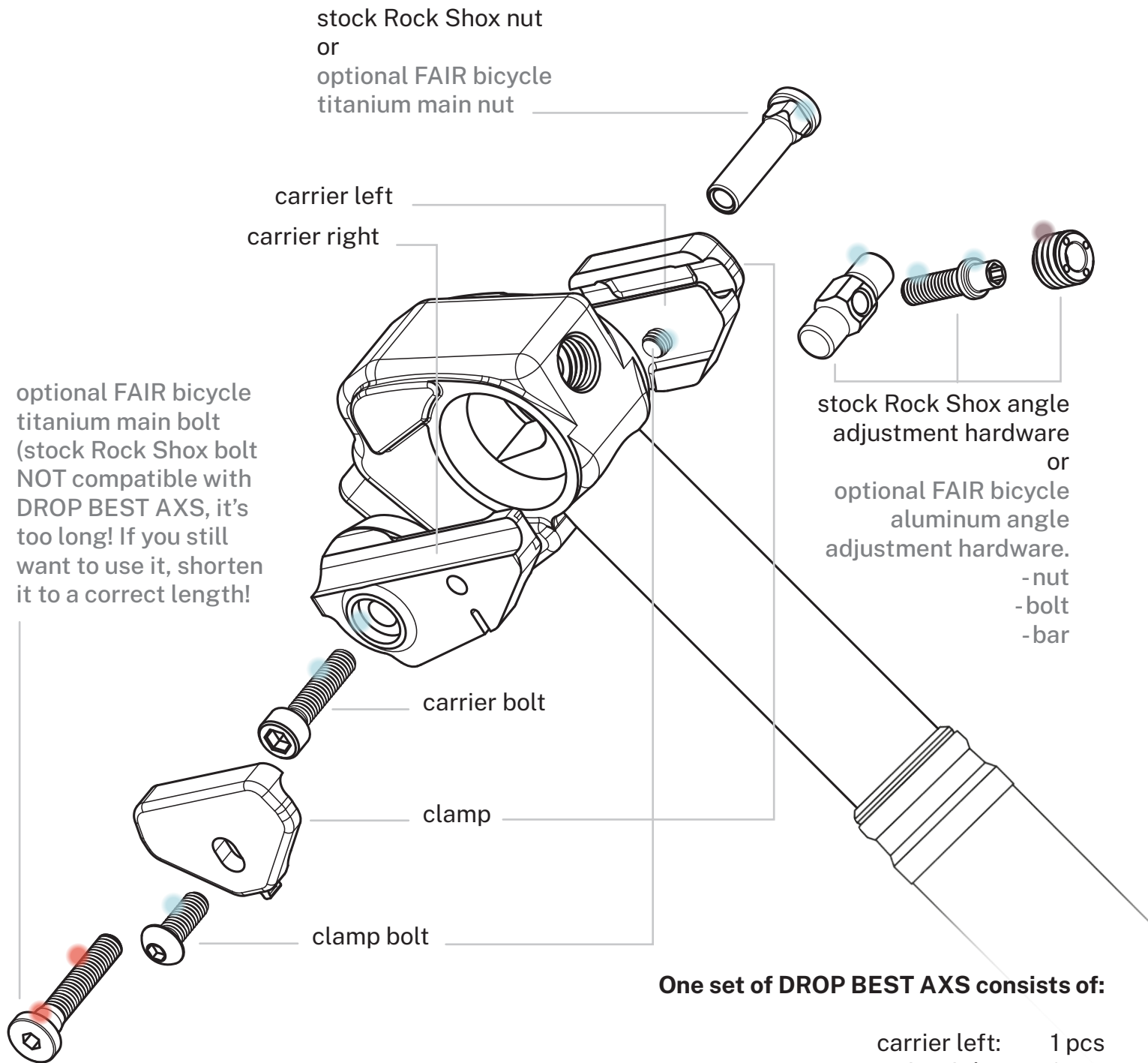
### **THE AXS TITANIUM MAIN BOLTS ARE ONLY COMPATIBLE WITH:**

ALL ROCK SHOX REVERB™ AXS®  
SEATPOST STANDARD SADDLE CLAMPS.  
THE FAIR bicycle DROP BEST AXS SADDLE CLAMP.

### **THE AXS ALUMINUM ANGLE ADJUST HARDWARE IS ONLY COMPATIBLE WITH:**

ALL ROCK SHOX REVERB™ AXS® SEATPOSTS.

# 3.PARTS DESCRIPTION



optional FAIR bicycle titanium main bolt (stock Rock Shox bolt NOT compatible with DROP BEST AXS, it's too long! If you still want to use it, shorten it to a correct length!

stock Rock Shox angle adjustment hardware or optional FAIR bicycle aluminum angle adjustment hardware.  
- nut  
- bolt  
- bar

**One set of DROP BEST AXS consists of:**

- carrier left: 1 pcs
- carrier right: 1 pcs
- clamp: 2 pcs
- clamp bolt M6 x 16 mm: 2 pcs
- carrier bolt M6 x 25 mm: 1 pcs

**optional:**

- titanium main bolt: 1 pcs
- titanium main nut: 1 pcs
- aluminum angle adj. harware nut: 1 pcs
- aluminum angle adj. harware bolt: 1 pcs
- aluminum angle adj. harware bar: 1 pcs

**!** **Titanium bolt option only: Apply a super low friction, highly pressure resistant lubricant (we recommend MOLYKOTE® G-Rapid plus) on all marked areas**

**● apply grease on all marked areas**

**● apply medium strength threadlock (we recommend Loctite® 243) on all marked areas**

## 4. PREPARATION

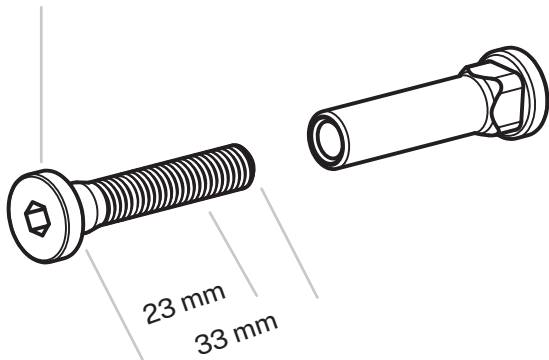
No preparation is needed to install the DROP BEST AXS saddle clamp when bought new. Simply remove the Rock Shox Reverb™ AXS® clamp and clamping bolts and replace them with the DROP BEST AXS parts. Installation instructions see pages 7-8.

If you have changed your saddle or disassembled your DROP BEST for another reason, go through the following steps:

1. Clean all parts with a soft, non fraying, dry cloth.
2. Apply grease on all parts as marked in the illustration on page 5.
3. Install as explained on pages 7-8.

## 5. INSTALLATION

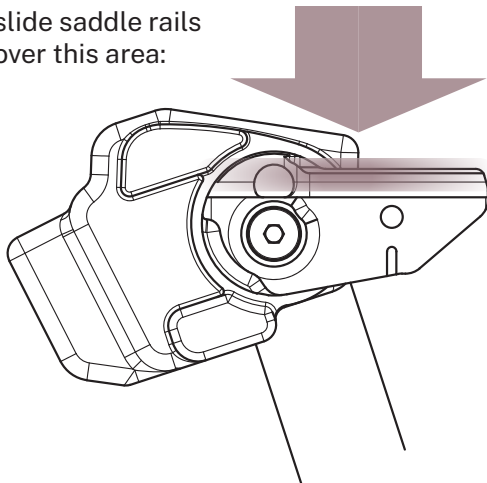
Tighten to 12 Nm, see 3.2!



### IMPORTANT – Titanium main bolts:

When running the titanium main bolts with DROP BEST AXS, you can shorten the bolt to 23 mm length from the stock 33 mm length using a hacksaw, for maximum weight savings. When using the titanium main bolts with the original Reverb™ AXS® clamps, **DO NOT** cut the bolt!

slide saddle rails over this area:



Put your bicycle in a bike stand.

### 1. Install the carriers

1.1 Install the carrier left and the carrier right with forwards or backwards offset, as desired.

**!Make sure the conical areas both of the carriers and the post head are free of any grease/oil.**

1.2 Install the main bolts just loose enough so you can still easily adjust the tilt using the angle adjustment mechanism.

Note: Use either the M6x25 steel bolt and the stock Rock Shox nut or our upgrade titanium bolt and nut.

### 2. Install the saddle

2.1 Install the saddle. If necessary, bend open the saddle rails slightly by hand to avoid rail damage.

**!Make sure you slide the saddle onto the carriers from the top-down, over the marked area (on the illustration shown here) to avoid possible rail damage (especially when using composite rails).**

### 3. Set the saddle angle

3.1 Set the saddle angle using the angle adjustment mechanism.

3.2 Using a calibrated torque wrench, tighten the main bolts as follows. For all of these combinations:

- DROP BEST AXS with the M6x25 steel bolt and stock Rock Shox nut
- DROP BEST AXS with the upgrade titanium main bolts
- Stock Rock Shox Reverb™ AXS® with the upgrade titanium main bolts

**Tighten to 12 Nm. Wait for 15 min circa, then re-tighten. Repeat until the bolt does not turn any further when you apply the full 12 Nm of torque. Repeat this process after your first ride and check the main bolts periodically for the correct torque value.**

### 4. Install the clamps

4.1 First side clamp: Slot the anchor into the rail of the carrier.

4.2 Tighten the clamp bolt until the clamp has roughly 0.5mm play.

## 5. INSTALLATION

- 4.3 Repeat with the second side clamp.
- 4.4 Hold down the clamp against the saddle rail with your thumb while tightening the clamp bolt to 12 Nm.
- 4.5 Repeat with the second side clamp.

### 5. Installation of the aluminum angle adjust hardware

5.1 First, remove the stock Rock Shox hardware. Clamp your whole seatpost in a vice as indicated [in the seatpost manual](#). Remove the nut (it's a right hand thread) using a pin spanner. Remove the bolt and bar. Clean the thread where the nut sits to make sure it is free of any grease/oil and threadlock residue. Install the nut hand tight and applying a little bit of threadlock onto it (we recommend Loctite® 243). Let dry the threadlock according to its manufacturers recommendations. Then install DROP BEST AXS as described on page 7-8. Or install the stock Rock Shox clamp as described [in the seatpost manual](#).

### 6. Safety check

Make sure the saddle rails do not slip in the DROP BEST AXS clamps.

Make sure the saddle/carrier assembly does not move on the Rock Shox Reverb™ AXS® post head.

We cannot foresee all the possible setups, you, as our valued customers, choose to use. **Therefore it is very important** to check whether DROP BEST AXS or any part of your saddle **collides** with the seatpost collar, frame or any other parts/equipment of the bike at full insertion of the dropper post or in normal riding condition. Pay special attention to rear tire/saddle collision at the post's and the bike's full travel! **Especially if you run DROP BEST AXS with rearward offset!** If you have any kind of collision, we would appreciate informing us via email, so we can learn and further improve the design. Thank you!

**5. Go ride!**



## 6.MAINTENANCE

**After every 40h of ride use:**

1. Totally disassemble your DROP BEST.
2. Clean all parts with a soft, non fraying, dry cloth.
3. Check all parts for signs of corrosion, cracks or other damage.
4. If there are any signs of corrosion, cracks or other damage, replace the parts immediately and do not ride before doing so.
5. Regrease all the parts as illustrated on page 6.  
Recommended grease: WAGNER Classic Oil KH 100.  
But any high quality grease will work too.
6. Reinstall your DROP BEST following the instructions on page 7-8.

**Failure to follow the instructions in this manual including these maintenance requirements can lead to serious injury or death.**

**Ride hard but safe!**

**THANK YOU  
FAIR bicycle**

**Copyright 2024 FAIR bicycle**  
STUDIO FROM SCRATCH LTD.

Operational Headquarters:

FAIR bicycle  
Hübscheren 6  
8932 Mettmenstetten  
Switzerland

email: [hello@fairbicycle.com](mailto:hello@fairbicycle.com)  
phone: +41 76 533 00 25

Legal Address:

STUDIO FROM SCRATCH LTD.  
Glärnischstrasse 297  
8708 Männedorf

[info@fromscratch.ch](mailto:info@fromscratch.ch)